

ALV2-Slim series / LOCK

Handle & Color Variation



The pressed stainless steel escutcheon is available as standard in 5 high-quality finishes.

Type 476 Handle



Satin Stainless Steel Finish (ST)
Key Override available as an option.

Type 66 Handle



Polished Stainless Steel Finish (SB)

Type 67 Handle



Satin Brass Finish (BS/PH)

Type 74 Handle



Polished Brass Finish (YB/PS)

Type 478 Handle



Mid Bronze Finish (CB)

The ALV2 hotel lock from MIWA has passed the ANSI 156.25 test confirming its status as a "Grade 1" electronic mortise lock.

MIWA LOCK CO., LTD.

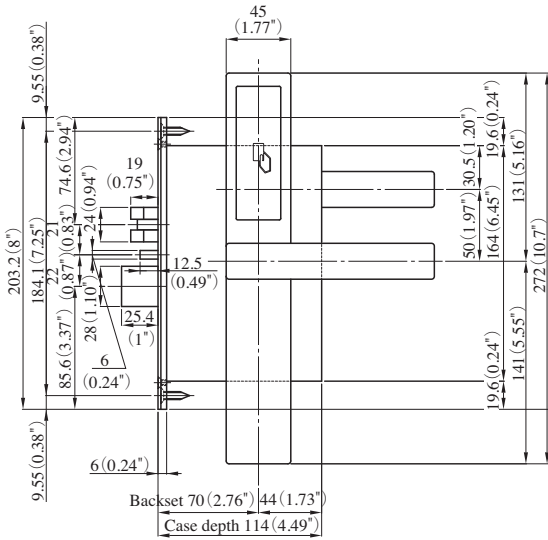
JAPAN 3-1-12, Shiba, Minato-ku, Tokyo 105-8510
TEL : +81-3-3452-5568 FAX : +81-3-3452-5911 URL : www.miwa-lock.biz

U.S.A 9272 Jeronimo, Suite 119, Irvine CA 92618
TEL : +1-949-328-5280 / Toll free : +1-888-412-9750 FAX : +1-949-328-5281 URL : www.miwalock.com

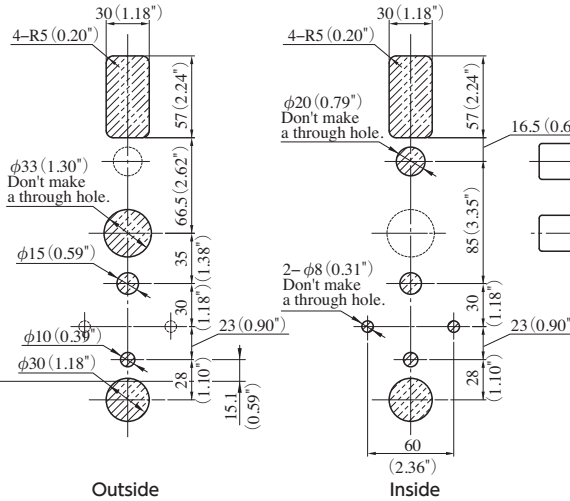
U.K Lincoln House, Waterside Court, Neptune Close, Medway City Estate, Rochester, Kent ME2 4NZ
TEL : +44-1634-296869 FAX : +44-1634-296992 URL : www.miwa-lock.biz

Detail Drawing

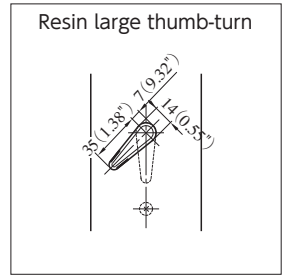
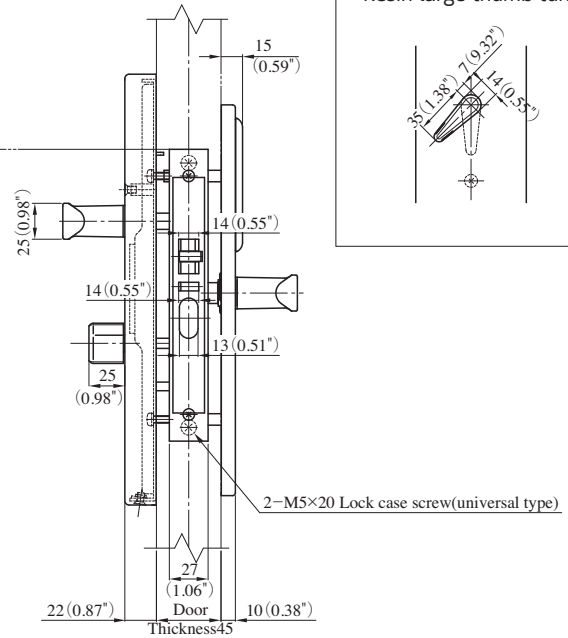
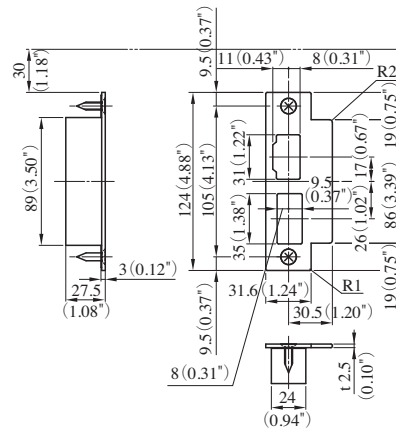
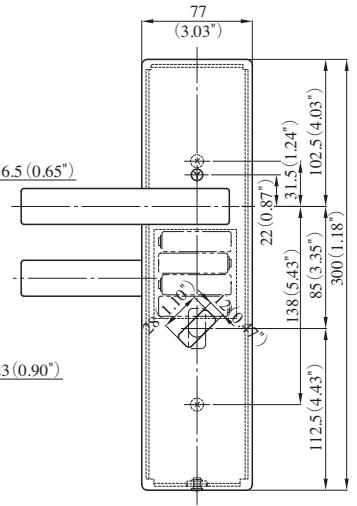
Outdoor side



Door preparation

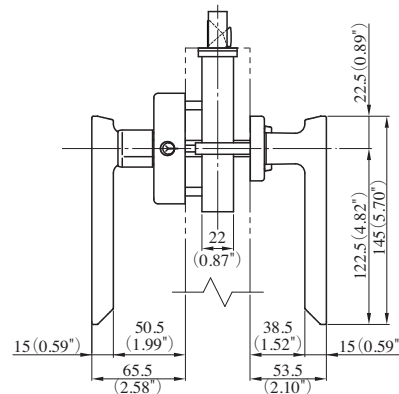


Indoor side
(Metal thumb-turn)



Specifications (ALV2-S series)

Product Name	Hotel Card Lock
	with cylinder : ALV2-S□* - 1 without cylinder : ALV2-S□* - 3
Product Number	□=D : 27mm , G : 32mm * shows a handle symbol
Mountable Handles	66 · 67 · 74 · 476 · 478
Mountable Cylinders	U9
Backset	70mm
	Satin Stainless Steel (ST) Polished Stainless Steel (SB)
Material/Finish	Satin Brass (BS) Polished Brass (YB) Mid Bronze (CB)
Door thickness	35~65mm
Usability	Left-hand and right-hand usable (inward opening)
Power Supply	4 AA alkaline batteries



Features and benefits

Guest Room Lock

Miwa ALV2 Electronic hotel locks

- ANSI Grade 1 (ANSI 156.25) electronic lock. UL tested and stamped.
- Full mortise with 1 inch deadbolt, 3/4 inch latch and anti pick mechanism.
- Dual technology works with RFID Mifare standard 1k and 4k Mifare credentials. Staff cards read, write and record when used.
- Each guest card has the option to add up to 6 additional guest rooms, plus all common areas and special VIP areas.
- Guest cards can be programmed to open an individual lock or multiple rooms or locks within a property. For example meeting areas can be added to the guest card or a club lounge, swimming pool, health club etc.
- System allows the option for guests and staff to use, cards, key fobs or wrist bands.
- Guest and standard staff cards cannot override deadbolt, visual signal given (flashing red light) if deadbolt in use.
- Emergency card overrides all locks where deadbolt is in use.
- Infra red programming and interrogation, no cable connection or data port on the lock.
- Last 600 transaction audit memory in the lock.
- Last 140 transaction audit memory stored on all staff cards.
- ADA compliant levers and thumb-turn.
- Visual and audible low battery signal on staff cards only.
- Powered by 4 standard alkaline batteries.
- Staff cards can be timed and set to operate on chosen days of the week.

Common areas, storage, offices, meeting rooms, non- guest rooms

Miwa ALV2 Electronic hotel locks

- Locks can be programmed as common doors and non-guest doors.
- Locks can be programmed so guest cards can only work between set times.
- Locks can be programmed to automatically open between pre-determined times.
- Electronics are coated for exterior installation.
- Exterior Steel and Aluminum Gate Boxes are available.